

Piano Solo.

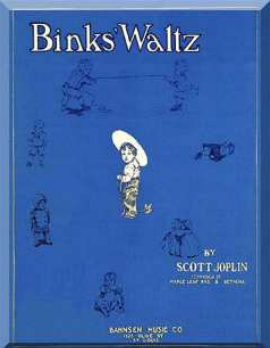
Scott Joplin

1867 - 1917



Bink's Waltz

Binks Waltz



Bink's Waltz

Scott Joplin
1905

Andante ♩ = 144

Piano *mp*

6

12

a tempo

a poco *mp* *rit.* *a tempo*

18

mf *rit.* *mp* *a tempo*

24 *a tempo*

rit. *mp* *leggiero*

Ped. * Ped. * Ped. * Ped. *

30

f

Ped. * Ped. * Ped. * Ped. *

37

con fuoco *mf*

Ped. * Ped. * Ped. * Ped. *

43

con fuoco

Ped. * Ped. * Ped. * Ped. *

49

mp *con fuoco* *mp*

Ped. * Ped. * Ped. * Ped. * Ped. *

56

mp

Ped. *

Ped. *

This system contains measures 56 through 61. The music is in a minor key. The right hand features a melodic line with eighth-note patterns and some rests. The left hand provides harmonic support with chords and moving lines. Pedal points are indicated by 'Ped.' and asterisks at the end of measures 57 and 59.

62

a tempo

rit. poco a poco mp rit.

Ped. *

Ped. *

This system contains measures 62 through 67. The tempo is marked 'a tempo'. There are dynamic markings of 'mp' and 'rit.' (ritardando). The music shows a gradual change in dynamics and tempo. Pedal points are indicated by 'Ped.' and asterisks at the end of measures 65 and 67.

68

a tempo

mf rit. mp

Ped. *

This system contains measures 68 through 73. The tempo is 'a tempo'. Dynamic markings include 'mf' and 'mp'. The music features some rests and a 'rit.' marking. A pedal point is indicated by 'Ped.' and an asterisk at the end of measure 73.

74

rit. mp

Ped. *

This system contains measures 74 through 79. The music includes a 'rit.' marking and a 'mp' dynamic. A pedal point is indicated by 'Ped.' and an asterisk at the end of measure 77.

80

a tempo

leggiero

Ped. *

Ped. *

Ped. *

This system contains measures 80 through 85. The tempo is 'a tempo' and the style is 'leggiero'. The music features a light, flowing melody in the right hand. Pedal points are indicated by 'Ped.' and asterisks at the end of measures 83, 84, and 85.

86 *Grandioso*

mf *cresc.* *f*

Ped. * Ped. * Ped. * Ped. *

92

decresc. *mp* *mf* *cresc.*

Ped. * Ped. * Ped. * Ped. * Ped. * Ped. *

98 *a tempo*

f *rit.* *mf*

Ped. * Ped. * Ped. * Ped. *

104

mf *mp*

Ped. * Ped. *

110 *a tempo*

mp *rit. poco* *a poco*

Ped. *

116 *a tempo*

rit. *Ped.* *

122 *a tempo*

mp *Ped.* *

128 *a tempo*

rit. *leggero*

133 *f sempre* *a tempo*

f sempre *rit. poco a poco* *a tempo* *R.H.* *L.H.* 8va

138 (8) 8va

(8) 8va *adagio* *Fine*